

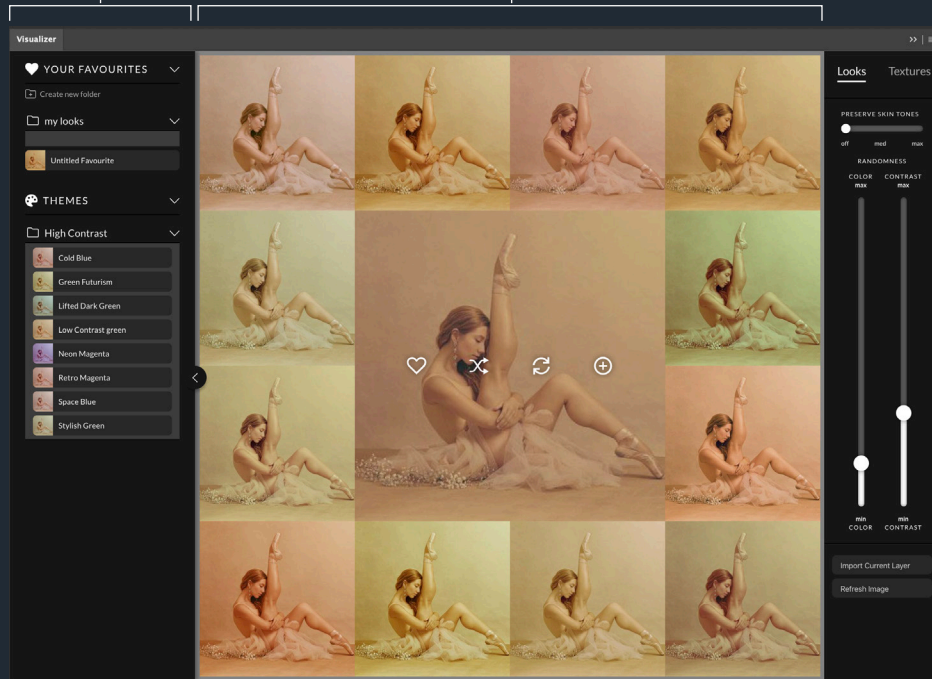


INFINITE LOOKS

User manual

V2.0.18

INFINITE LOOKS



Visualizer

This is the Visualizer Extension Panel. With its intuitive user interface and over 2.000 Gigabytes of content, the Visualizer is the fastest way to explore the library.

Main Interface

Organizer:

You can discover color grades (looks) that you have favorited or if you would like to explore any existing themes.

Canvas:

This is the main interface where you interact with your image and the looks the panel applies based on your preferred settings from the Controls or Organizer options.

Controls:

Change the settings of how the colors are applied to your image preview based on a variety of intensities and masking options.



Please note: The Infinite Looks Panel and the Infinite Texture Panel are sharing one Extension Panel called "Visualizer". You can explore both of them, but to apply it to your documents, you need to purchase the corresponding license!



INFINITE LOOKS



Organizer

Your Favourites:

Organize your favourite looks. Create and rename your folders.

Themes:

If you want great suggestions, explore our curated looks to begin with!

Arrow Button:

Opens and closes the organizer for an efficient layout.



Canvas

Favorite:

Once you find a look you love, add it to your favorites with this button.

Re-Shuffle:

Randomize and reshuffle your results in case you want to see more options from the center look.

Variants:

The outer circle contains the variety of looks from the panel. By holding down the ALT-Key, the look will be placed on your image without reshuffling the grid of looks.

Add:

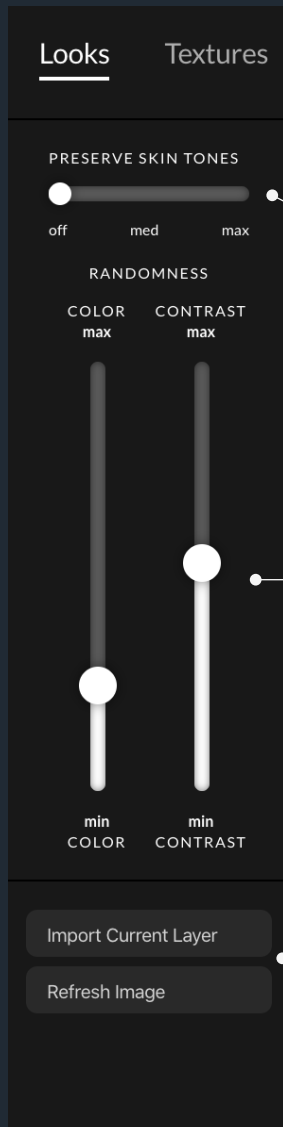
Adds a new color lookup layer on your layer stack with your preview applied.

Replace:

If you've selected an Infinite Looks layer from your Photoshop document, this will replace the center look with it. Useful for re-loading a look from a previously saved document.



INFINITE LOOKS



Controls

Looks / Textures switch:

The navigation element is used to choose either Infinite Looks or Texture.

Please note: These are two separate products, you can use them but you must have the purchased license to apply the results to your images.

Preserve skin tone:

You can retain the original skin tones and control the degree of preservation with two steps.

Sliders:

Choose how random the color and contrast is for your images. A lower setting will give you more similar results compared to the primary image in the middle.

Import Current Layer:

If you have selected an Infinite Looks layer in your layer stack, you can pick that LUT layer and bring it back into the Visualizer as a starting point for it to reference.

Refresh Image:

Refresh the image preview in Visualizer.